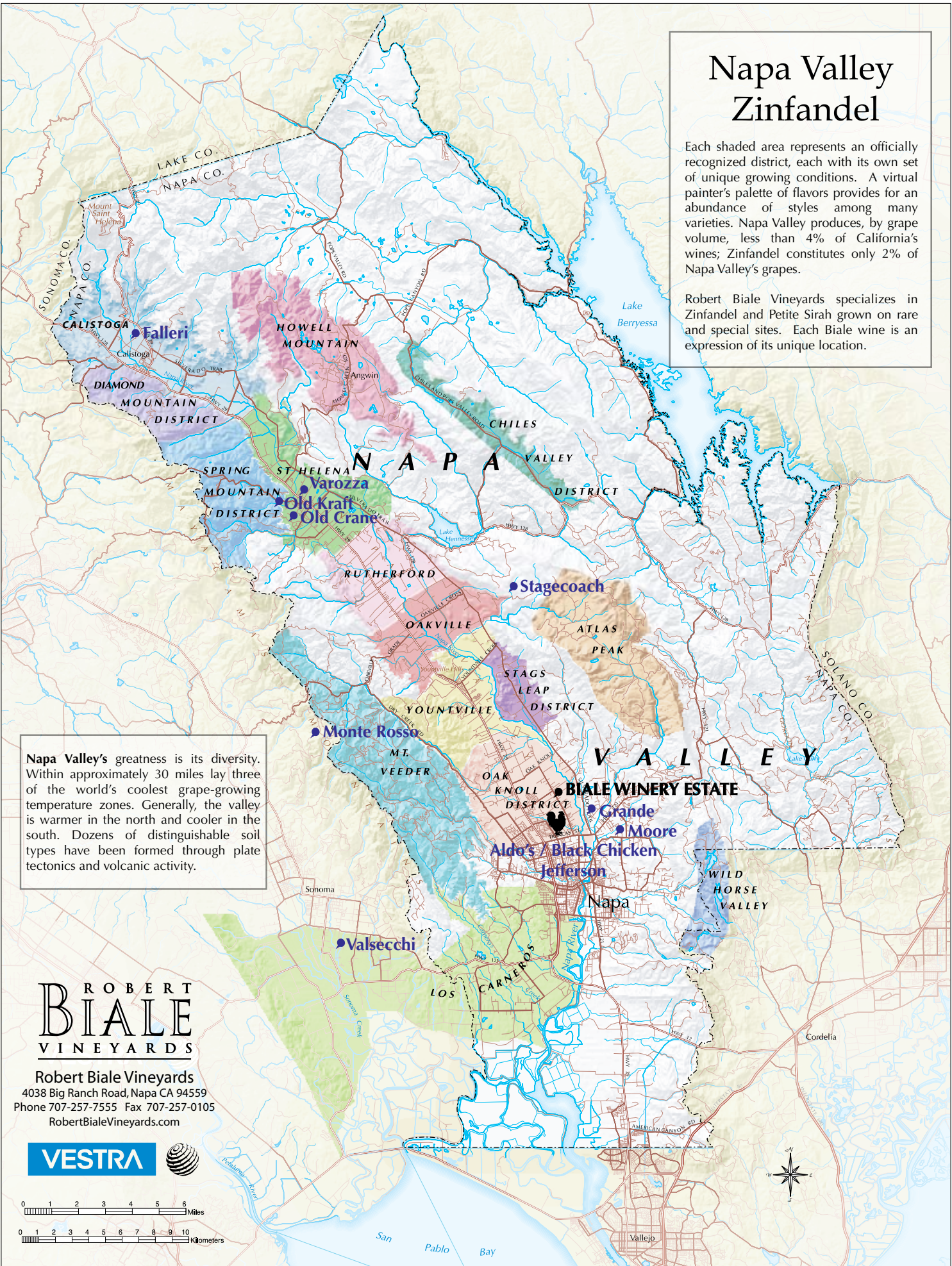


Napa Valley Zinfandel

Each shaded area represents an officially recognized district, each with its own set of unique growing conditions. A virtual painter's palette of flavors provides for an abundance of styles among many varieties. Napa Valley produces, by grape volume, less than 4% of California's wines; Zinfandel constitutes only 2% of Napa Valley's grapes.

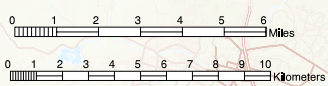
Robert Biale Vineyards specializes in Zinfandel and Petite Sirah grown on rare and special sites. Each Biale wine is an expression of its unique location.

Napa Valley's greatness is its diversity. Within approximately 30 miles lay three of the world's coolest grape-growing temperature zones. Generally, the valley is warmer in the north and cooler in the south. Dozens of distinguishable soil types have been formed through plate tectonics and volcanic activity.



ROBERT BIALE VINEYARDS

Robert Biale Vineyards
 4038 Big Ranch Road, Napa CA 94559
 Phone 707-257-7555 Fax 707-257-0105
 RobertBialeVineyards.com





The Biale Zinfandel Vineyards

Farming Zinfandel is a Biale family tradition that began in the old days of Napa. Today, Aldo Biale's vineyard is one of several historic sites from which Robert Biale Vineyards produces some of the world's finest Zinfandels.

Aldo's Vineyard. Oak Knoll District Estate. The old vines planted in 1937 on the Biale ranch in Napa that produce our signature wine.

Black Chicken. Oak Knoll District Estate. Named for the old code name for Aldo's secret Zinfandel, younger vines behind Aldo's home.

Jefferson Block. Oak Knoll District Estate. 1 ½ acres of younger vines planted in 1999 on St. Peter's Church clone next to the old vines at Aldo's Vineyard.

Grande Vineyard. Napa. Planted in 1920 on Napa's Silverado Trail, named for the Italian immigrant father of Dorothy Rossi and the grandfather of Tony Rossi – Theodosio Grande.

Stagecoach Vineyards - The Biale Block. Napa Valley. The four-acre Zinfandel site planted at this acclaimed mountain ranch above Oakville. Aldo's and Old Crane clones on St. George rootstock.

Old Crane Ranch. St. Helena Appellation. Planted on west St. Helena's gravel-rich soils in the 1880's by Dr. Crane, a Napa Valley pioneer.

Old Kraft Vineyard. St. Helena Appellation. Planted in the 1890's and rescued and restored by Bill and Margie Hart.

Varozza Vineyard. St. Helena Appellation. Jack Varozza continues a family tradition at this historic site along York Creek.

Falleri Vineyard. Calistoga Appellation. Sonja Spencer's one acre planted by her grandmother in 1924 in the town of Calistoga near the hot springs.

Valsecchi Vineyard. Carneros Appellation. Century-old vines near the town of Sonoma once farmed by Ron Mick's grandfather John Valsecchi.

Monte Rosso Vineyard. Sonoma Valley. Legendary mountain vineyard farmed by the Louis M. Martini family for three generations and now owned by the Gallo family.

The Biale Winery Vineyard. Oak Knoll District Estate. The five acre vineyard surrounding the Biale winery planted in 1995. Geyserville, Pacini, Evangelico, Morisoli, Werle, Primitivo clones.

Moore Vineyard. Napa Valley. Scenic historic vineyard preserved by Bill Moore near Coombsville in Napa along Hagen Road first planted in 1905.